

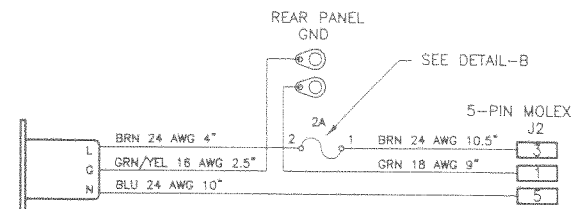
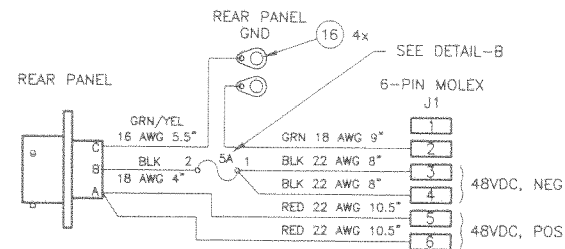
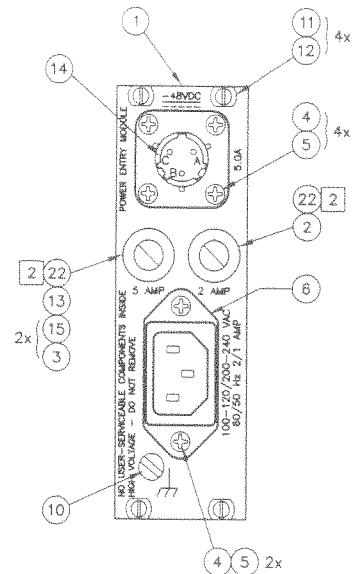
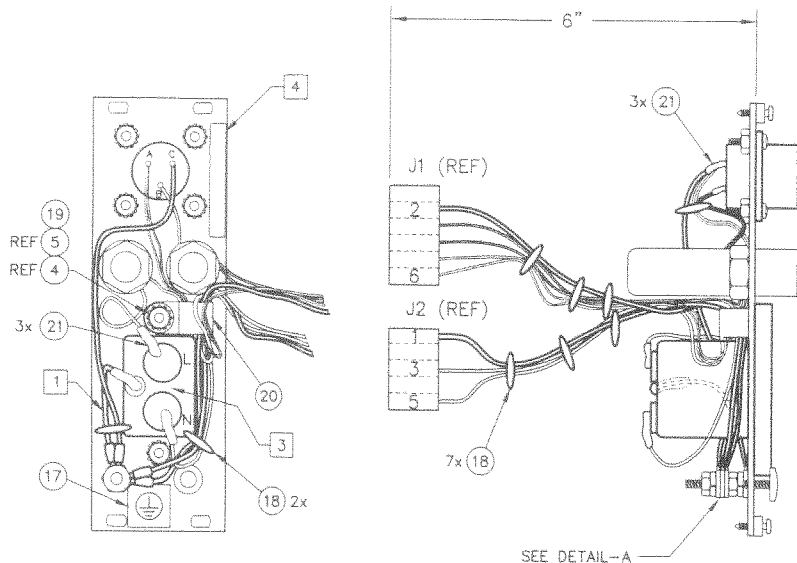
© TrueTime, Inc. 2002 All Rights Reserved.

PROPRIETARY NOTICE

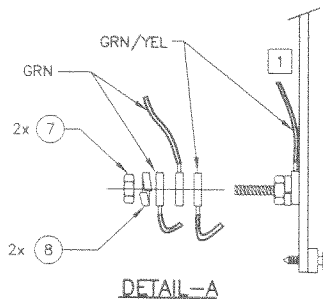
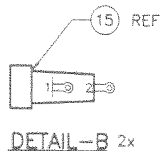
THIS DOCUMENT, WHETHER PATENTABLE OR NON-PATENTABLE SUBJECT MATTER, EMBODIES PROPRIETARY AND CONFIDENTIAL INFORMATION AND IS THE EXCLUSIVE PROPERTY OF TRUETIME, INC. IT MAY NOT BE REPRODUCED, USED OR DISCLOSED TO OTHERS FOR ANY PURPOSE EXCEPT THAT FOR WHICH IT IS LOANED, AND IT SHALL BE RETURNED UPON DEMAND.

REVISIONS

REV	DESCRIPTION	DATE	APPROVED
A	ECO 1114; WIRE Chgs	10/30/97	
B	CAR 736- UPDATE DETAIL A; WIRE LENGTH CHANGES	03/23/98	
C	REMOVE ITEM 9; PANEL SCREENED	05/20/98	
D	ADD TWO TIE WRAPS; ADD RTV	06/30/98	
E	ECO 1183	11/25/98	
F	CAR 1373	01/25/99	
G	PR 3256	06/03/99	DAA
H	PR 3484	07/30/99	SBK
J	PR 3835; PR 3961; PR 4112	01/11/00	JG
K	ECO 1736	05/13/02	<i>[Signature]</i>



WIRING DIAGRAM



- 4 STAMP ASSEMBLY NUMBER AND REV LEVEL, AS INDICATED.
- 3 APPLY A SMALL AMOUNT OF RTV TO COVER THE CONTACTS.
- 2 INSTALL HEAT SHRINK TUBING (ITEM 22) OVER FUSE HOLDER (ITEM 15) FROM FAR SIDE AFTER WIRING.
- 1 GRN/YEL WIRE FROM AC POWER SOCKET (ITEM 6) MUST BE INSTALLED NEAREST TO PANEL AND FASTENED SEPARATELY.

NOTES: UNLESS OTHERWISE SPECIFIED

FILENAME: 560-1239-1
DATE: 05-13-02

CONTRACT NO.				
APPROVALS	DATE			
DRAWN BY KOLLANDER	9/97			
CHECKED BY				
APPROVED BY	D.A.A.	6/99		
NEXT ASSY	SIZE	CODE IDENT NO	DRAWING NO.	REV
	B		560-1239-1	K
	SCALE NONE			SHEET 1 OF 1

ORIGINAL

Doc

Parent Item Component Item	Parent Description Component Description	Batch Quantity Quantity Per	Bubble			Remarks	Level	Ty	Seq	T	Effective	
			UM	Seq No	Type						From	Thru
560-1239-1	ASSY,PWR SUP AC/DC ENTRY		EA		M	Rev 3	Draw					
0000-PL	PARTS LIST REV LEVEL	1.00	EA			REV K (05-21-02)	1	S	2.0	M	1/1/2000	12/31/2010
0000-PRINT	REFERENCE PRINT	1.00	EA			560-1239-1 REV K	1	S	3.0	M	1/1/2000	12/31/2010
223-379	SCREW CAP NP M2.5 X 11	4.00	EA	12			1	S	4.0	P	1/1/2000	12/31/2010
223-464	SLEEVE, STAINLESS	4.00	EA	11			1	S	5.0	P	1/1/2000	12/31/2010
230-005	CLAMP CABLE 1/4 IN.	1.00	EA	20			1	S	6.0	P	1/1/2000	12/31/2010
232-003	TIE WIRE 3.5INCH LG.BLACK	9.00	EA	18			1	S	7.0	P	1/1/2000	12/31/2010
240-004-004	SCREW PH PN SS 4-40X1/2	6.00	EA	4			1	S	8.0	P	1/1/2000	12/31/2010
240-010-003	SCREW PH BH SS 10-32X3/8	1.00	EA	10			1	S	9.0	P	1/1/2000	12/31/2010
251-004	NUT KEP SS 4-40	6.00	EA	5			1	S	10.0	P	1/1/2000	12/31/2010
252-010	NUT HX #10-32	2.00	EA	7			1	S	11.0	P	1/1/2000	12/31/2010
253-004L	WSHR,FLT #4 SS .312 OD LP	1.00	EA	19			1	S	12.0	P	1/1/2000	12/31/2010
254-010	WSHR SPLIT SS 10	2.00	EA	8			1	S	13.0	P	1/1/2000	12/31/2010
273-023	TERM, RING #10 22-16 AWG	4.00	EA	16			1	S	14.0	P	1/1/2000	12/31/2010
285-01A	SEALANT SILICONE 2.8 OZ	.10	EA				1	S	15.0	P	1/1/2000	12/31/2010
315-016-189UL	WIRE 16 AWG GR/YLW UL1015	1.00	FT			SEE WIRING	1	S	16.0	P	1/1/2000	12/31/2010
315-018-005UL	WIRE 18 AWG GREEN UL1015	1.50	FT			SEE WIRING	1	S	17.0	P	1/1/2000	12/31/2010
315-018-010	WIRE 18AWG PVC INS BLACK	.50	FT			SEE WIRING	1	S	18.0	P	1/1/2000	12/31/2010
315-022-002	WIRE 22AWG PVC INS RED	2.00	FT			SEE WIRING	1	S	19.0	P	1/1/2000	12/31/2010
315-022-010	WIRE 22AWG PVC INS BLACK	1.50	FT			SEE WIRING	1	S	20.0	P	1/1/2000	12/31/2010

Parent Item Component Item	Parent Description Component Description	Batch Quantity Quantity Per	UM	Bubble Seq No	Remarks	Effective					
						Level	Ty	Seq	T	From	Thru
315-024-001UL	WIRE 24 AWG BROWN UL1015	1.50	FT		SEE WIRING	1	S	21.0	P	1/1/2000	12/31/2010
315-024-006UL	WIRE 24 AWG BLUE UL1015	1.00	FT		SEE WIRING	1	S	22.0	P	1/1/2000	12/31/2010
326-004	SHRINK TUBING CLR 1/8 IN	.40	FT	21		1	S	23.0	P	1/1/2000	12/31/2010
326-005	SHRINK TUBING CLR 1/2 IN	.40	FT	22		1	S	24.0	P	1/1/2000	12/31/2010
342-001	SOCKET POWER & LINE FLTR	1.00	EA	6		1	S	25.0	P	1/1/2000	12/31/2010
363-2.0	FUSE 2A 250V 3AG SB	1.00	EA	2		1	S	26.0	P	1/1/2000	12/31/2010
363-5.0SB	FUSE 5A 3AG SLO-BLO	1.00	EA	13		1	S	27.0	P	1/1/2000	12/31/2010
365-005	FUSE HOLDER	2.00	EA	15		1	S	28.0	P	1/1/2000	12/31/2010
365-007	FUSE CARRIER	2.00	EA	3		1	S	29.0	P	1/1/2000	12/31/2010
376-03MS-P	CONN 3-P PLUG BULKHEAD	1.00	EA	14		1	S	30.0	P	1/1/2000	12/31/2010
400-021	LABEL, EPROM 1/2 X 1 IN	0.00	BX			1	S	31.0	P	1/1/2000	12/31/2010
	QTY 0 LABEL PER DRAWING NOTE 4 LABEL PART OF SHOP SUPPLIES										
400-041	LABEL, GND SYMBOL	.02	EA	17		1	S	32.0	M	1/1/2000	12/31/2010
402-006T	PIN 22-26 AWG	4.00	EA		SEE WIRING	1	S	33.0	P	1/1/2000	12/31/2010
402-007T	PIN 18-24 AWG	4.00	EA		SEE WIRING	1	S	34.0	P	1/1/2000	12/31/2010
403-005T	CONN 5-P TERM	1.00	EA		SEE WIRING	1	S	35.0	P	1/1/2000	12/31/2010
403-006T	CONN 6-P	1.00	EA		SEE WIRING	1	S	36.0	P	1/1/2000	12/31/2010
560-1239	PNL,PWR SUP AC/DC ENTRY	1.00	EA	1		1	S	37.0	P	1/1/2000	12/31/2010
560-1239-1-OSV	ASSY,PWR SUP AC/DC ENTRY-OSV	1.00	EA			1	S	38.0	P	8/24/2000	12/31/2010